

Professional

Comprehensive fleet management, compliance, and vehicle health

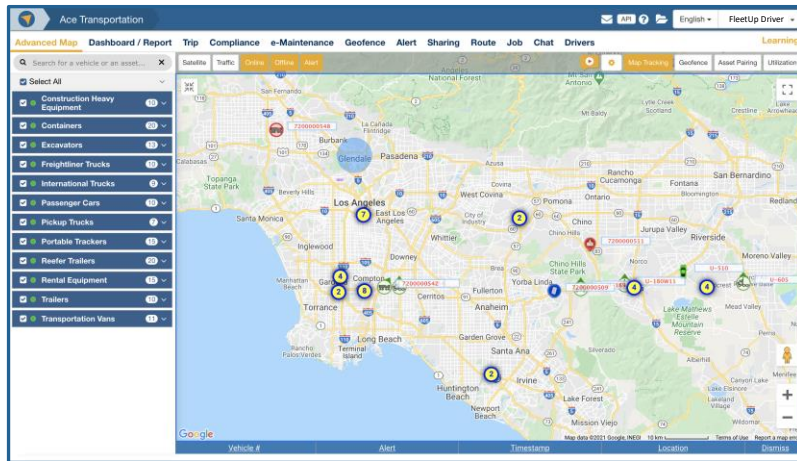
Product overview

FleetUp Professional is FleetUp's most comprehensive fleet management software solution.

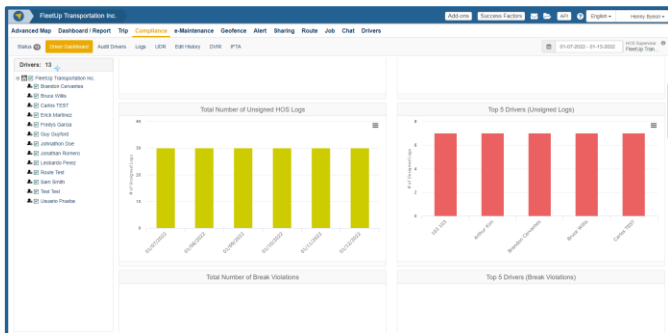
FleetUp Professional combines all the features in FleetUp Standard, FleetUp Compliance and FleetUp Advanced to deliver the most powerful fleet management tool for tracking vehicles, ensuring

driver compliance and monitoring the vehicle health for your entire fleet.

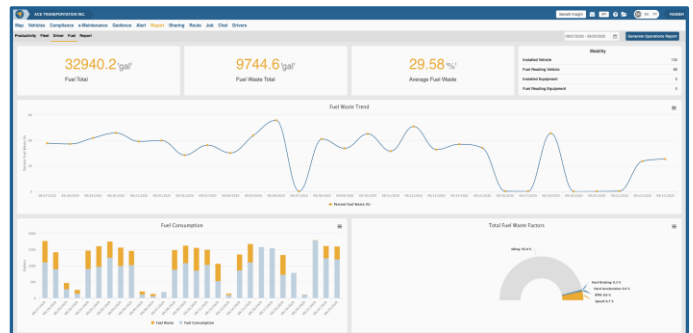
FleetUp Professional also provides detailed business insights and analytics that enable you to make actionable decisions that streamline fleet operations and lower costs.



FleetUp Professional Advanced Map updates vehicle locations every 10 seconds.



FleetUp Professional Compliance Dashboard keeps close tabs on driver ELD mileage and HOS hours.



FleetUp Professional Dashboard Reports enables you to optimize fleet operations and reduce operating costs.

Core features

FleetUp Professional supports the same GPS tracking features as FleetUp Standard enabling you to manage your fleet faster operations more simply and more intuitively than ever before:

- Real-time GPS tracking with 10 second updates
- Advanced map with live view, trip history, and data sharing
- Geofences with detention time, transit time analysis and entering and exiting alerts
- Suspicious movement detection to protect against theft
- Custom alerts for speeding and idling
- Vehicle inventory displayed on map for easy reference
- Custom tracking and monitoring alerts
- Robust reporting of driving behavior (speeding, harsh braking, etc.)
- Live ETA, trip history and account sharing
- Mobile app for fleet admins and operators

Compliance features

FleetUp Professional also includes additional IFTA/ELD/HOS features designed to ensure that your drivers remain fully compliant with the latest federal regulatory requirements.

- FMCSA, ELD, HOS reporting
- Preventive HOS violation alerts with voice assistant
- HOS violation dashboard
- AI HOS audits and edit suggestions
- Unidentified Driving Report (UDR)
- Electronic Driver Vehicle Inspection (DVIR)
- International Fuel Tax Reporting (IFTA)

Advanced features

In addition, FleetUp Professional provides a complete array of fuel and maintenance monitoring tools that enable you to reign in spiraling fuel and maintenance costs and keep your operating budgets under control.

- Remote engine diagnostics – odometer, engine hours, temperature and other engine data
- Maintenance cycle management (oil filters, brakes, tire alignment, belts and hoses)
- Vehicle condition and engine codes
- Current fuel level
- Fuel tracking use and fuel-wasting analysis
- Remote engine starter shutoff (option)

FleetUp supported hardware



3NW

Additional features

Customer support	FleetUp offers comprehensive customer support. Each customer will be onboarded and trained by our customer success team. Proactive customer care provides periodic check-ins to ensure you are utilizing FleetUp to its fullest capacity.
Free web API for integrations	FleetUp Professional comes with free web API for integration with 3rd-party apps so you can extend the capabilities of the platform by integrating calendar, terminal management system (TMS), and warehouse management applications with the FleetUp Professional platform.
Professional services (optional)	FleetUp Professional Services connects you to a FleetUp expert who will learn your business inside and out and tailor the FleetUp platform to your organization's unique needs.