

# Equipment Standard

Equipment tracking and theft protection

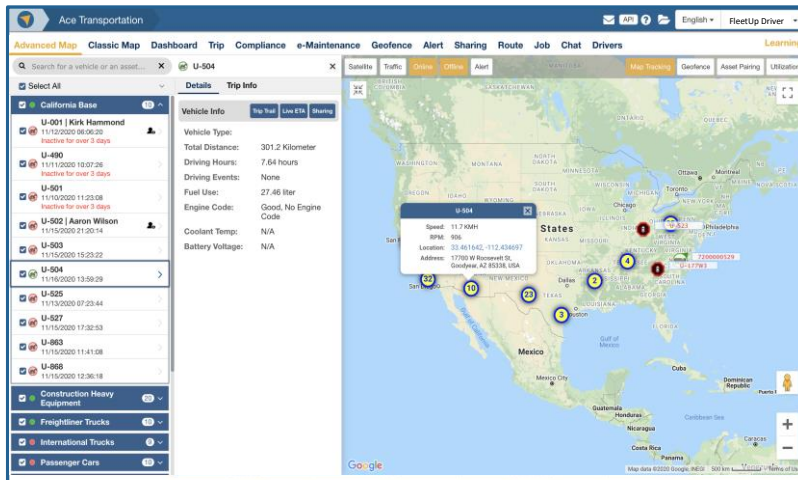
## Product overview

FleetUp Equipment Standard is an end-to-end software solution for tracking heavy equipment like bulldozers, cranes, forklifts and excavators.

Combining FleetUp Equipment Standard with the appropriate FleetUp hardware enables you to track the location of your heavy equipment vehicles in

real-time and get immediate alerts if they are moved offsite or outside of geofence boundaries without authorization.

FleetUp Equipment Standard is an essential tool for ensuring that your heavy equipment vehicles are being utilized efficiently and are fully protected from potential misuse or theft.



**FleetUp Equipment Standard ensures optimal utilization of your equipment and prevents theft.**

## Core features

FleetUp Equipment Standard includes the following core features:

- Real-time GPS tracking with 10 second updates
- Advanced map with live view, trip history, and data sharing
- Geofences with detention time, transit time analysis and entering and exiting alerts
- Suspicious movement detection to protect against theft
- Vehicle inventory displayed on map for easy reference
- Custom tracking and monitoring alerts
- Live ETA, trip history and account sharing
- Mobile app for remote management from anywhere

## FleetUp supported hardware



4WT



5TA

## Additional features

<b>Customer support</b>	FleetUp offers comprehensive customer support. Each customer will be onboarded and trained by our customer success team. Proactive customer care provides periodic check-ins to ensure you are utilizing FleetUp to its fullest capacity.
<b>Free web API for integrations</b>	FleetUp Equipment Standard comes with free web API for integration with 3rd-party apps so you can extend the capabilities of the platform by integrating calendar, terminal management system (TMS), and warehouse management applications with the FleetUp Equipment Standard platform.
<b>Professional services (optional)</b>	FleetUp Professional Services connects you to a FleetUp expert who will learn your business inside and out and tailor the FleetUp platform to your organization's unique needs.