

Equipment Advanced

Real-time equipment tracking and engine diagnostics

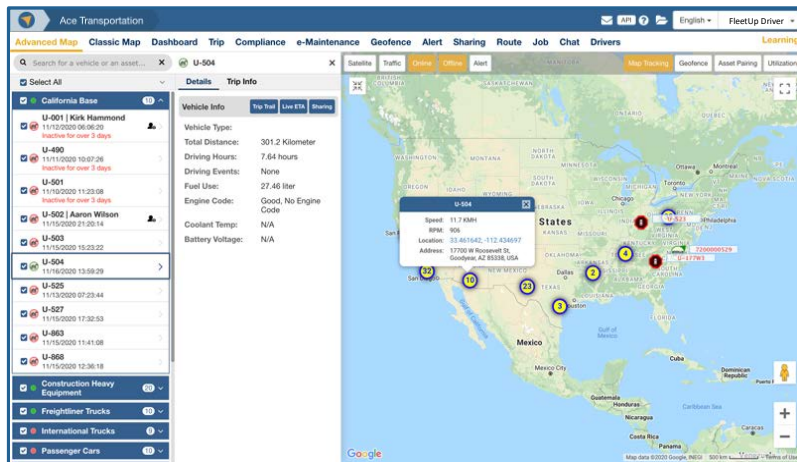
Product overview

FleetUp Equipment Advanced combines GPS tracking and monitoring of heavy equipment with remote engine diagnostics.

When paired with the appropriate FleetUp hardware, FleetUp Equipment Advanced enables you to track the exact location of your heavy

equipment in real-time while getting continuous engine health updates.

FleetUp Equipment Advanced ensures that your valuable heavy equipment vehicles are being used safely and efficiently while reducing costly downtime due to unanticipated maintenance and repairs.



FleetUp Equipment Advanced ensures optimal utilization of your equipment and prevents theft.

The screenshot displays the 'e-Maintenance' section of the FleetUp Equipment Advanced software. It features a table with columns for vehicle information and various maintenance metrics. The table includes a search bar and a 'Success Factors' indicator.

| Vehicle | Vehicle # | Engine Code | Odometer | Engine Hour | Air Filter | Oil Filter | Transmission | Brakes | Tires | Cooling | Alignment | Belt & Hoses | Drive Shaft | Tune Up | History |
|---------------------------|-----------|-------------|------------|-------------|------------|------------|--------------|--------|---------|---------|-----------|--------------|-------------|---------|---------|
| | U-500 | 0 | 451,474.58 | 1,969 | 21 | 80,000 | 50,000 | 30,000 | 100,000 | 50,000 | 80,000 | -834 | 8,031 | 300,000 | Q |
| | U-600 | 0 | 438,460.35 | 1,970 | 32 | 543 | 456 | 586 | 698 | 546 | 80,000 | 364 | 8,030 | 322 | Q |
| 1582-1582-Aristo | U-480 | 0 | 397,404.58 | 3,554 | 102 | 124 | 786 | 879 | 148 | 986 | 874 | 458 | 6,446 | 385 | Q |
| | U-501 | 0 | 362,385.03 | 1,970 | 20 | 543 | 746 | 574 | -135 | 798 | 132 | 543 | 8,030 | 213 | Q |
| 2007-SCANIA-R420 | U-530 | 0 | 337,883.76 | 1,979 | 95 | 315 | 351 | 408 | 603 | 595 | 325 | 134 | 8,021 | 432 | Q |
| | U-604 | 0 | 327,358.05 | 1,970 | 29 | 543 | 235 | -564 | 794 | 987 | 231 | 356 | 8,030 | 875 | Q |
| 2014-VOLVO-FH460 | U-007 | 0 | 315,974.07 | 1,970 | 30 | 206 | 386 | 268 | 648 | 966 | 874 | 458 | 8,030 | 918 | Q |
| 2013-CITROEN-JUMPI | U-481 | 0 | 311,166.13 | 1,970 | 101 | 403 | 562 | 748 | 964 | 429 | -613 | 863 | 8,030 | 320 | Q |
| 3348-Western Star-4800 FA | U-606 | 0 | 309,023.25 | 1,970 | 206 | 486 | 789 | 879 | 454 | 796 | 458 | 662 | 8,030 | 865 | Q |

FleetUp Equipment Advanced tracks your heavy equipment vehicles 24/7 while providing engine diagnostics.

Core features

FleetUp Equipment Advanced combines the core features of FleetUp Equipment Standard with advanced heavy equipment engine diagnostics.

- Real-time GPS tracking with 10 second updates
- Advanced map with live view, trip history, and data sharing
- Geofences with detention time, transit time analysis and entering and exiting alerts
- Suspicious movement detection to protect against theft
- Vehicle inventory displayed on map for easy reference
- Custom tracking and monitoring alerts
- Live ETA, trip history and account sharing
- Mobile app for remote management from anywhere

Advanced features

In addition, FleetUp Equipment Advanced adds these feature enhancements to FleetUp Equipment Standard software:

- Remote engine diagnostics – odometer, engine hours, temperature and other engine data
- Maintenance cycle management (oil filters, brakes, tire alignment, belts and hoses)
- Vehicle condition and engine codes
- Fuel tracking use and fuel-wasting analysis

FleetUp supported hardware



4WT

Additional features

| | |
|---|--|
| Customer support | FleetUp offers comprehensive customer support. Each customer will be onboarded and trained by our customer success team. Proactive customer care provides periodic check-ins to ensure you are utilizing FleetUp to its fullest capacity. |
| Free web API for integrations | FleetUp Equipment Advanced comes with free web API for integration with 3rd-party apps so you can extend the capabilities of the platform by integrating calendar, terminal management system (TMS), and warehouse management applications with the FleetUp Equipment Advanced platform. |
| Professional services (optional) | FleetUp Professional Services connects you to a FleetUp expert who will learn your business inside and out and tailor the FleetUp platform to your organization's unique needs. |