

Asset Container

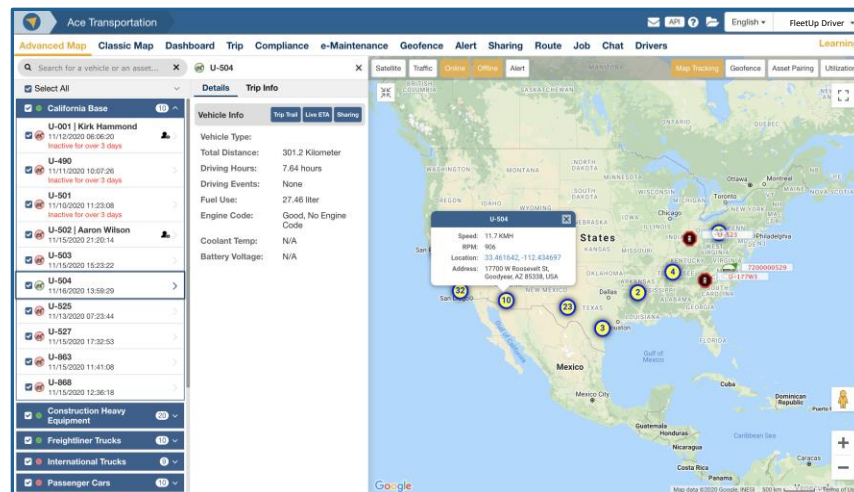
Container and trailer tracking, monitoring and security

Product overview

FleetUp Asset Container is an end-to-end asset tracking solution that prevents container theft and streamlines inventory management.

FleetUp Asset Container lets you pinpoint the exact location of any container from the time it is unloaded at the shipping terminal or port of arrival until it is delivered to its final destination.

When paired with the appropriate hardware, FleetUp Asset Container informs you of any route deviations and sends real-time alerts in the event that the container lock has been tampered with during transit. FleetUp Asset Container is an indispensable tool for managing container logistics throughout the entire supply chain.



FleetUp Asset Container tracks the location of your containers and sends alerts if tampering or theft is detected.

Core features

- Real-time GPS tracking with 10 second updates
- Advanced map with live view, trip history, and data sharing
- Geofences with detention time, transit time analysis and entering and exiting alerts
- Suspicious movement detection to protect against theft
- Asset inventory utilization displayed on map
- Battery level and charging status alerts
- Custom tracking and monitoring alerts
- Lock status, remote unlock button
- Cable cut alerts
- Asset pairing record and alerts when vehicles meet and separate
- Live ETA, trip history and account sharing
- Mobile app for remote management from anywhere
- Optional solar chargers

FleetUp supported hardware



4CJ



Solar charger (Optional)

Additional features

Customer support	FleetUp offers comprehensive customer support. Each customer will be onboarded and trained by our customer success team. Proactive customer care provides periodic check-ins to ensure you are utilizing FleetUp to its fullest capacity.
Free web API for integrations	FleetUp Asset Container comes with free web API for integration with 3rd-party apps so you can extend the capabilities of the platform by integrating calendar, terminal management system (TMS), and warehouse management applications with the FleetUp Asset Container platform.
Professional services (optional)	FleetUp Professional Services connects you to a FleetUp expert who will learn your business inside and out and tailor the FleetUp platform to your organization's unique needs.