

Advanced

Real-time GPS tracking and vehicle health monitoring

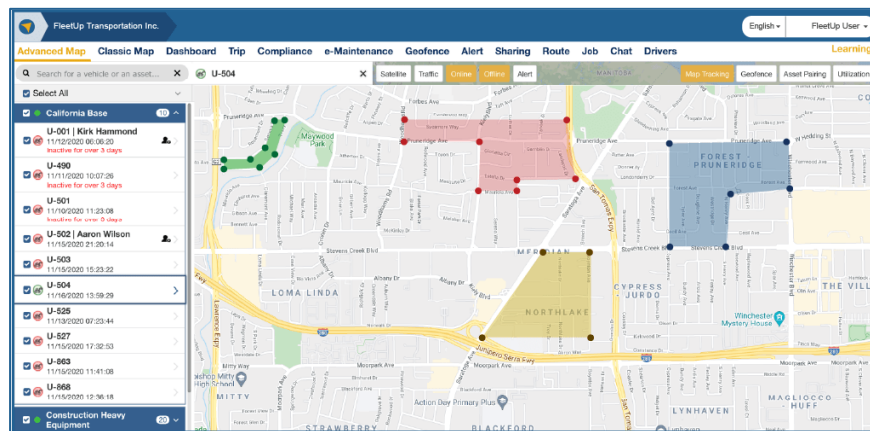
Product overview

FleetUp Advanced is a software solution that combines real-time GPS vehicle tracking with fuel analysis, engine diagnostics, and remote maintenance monitoring for fleets.

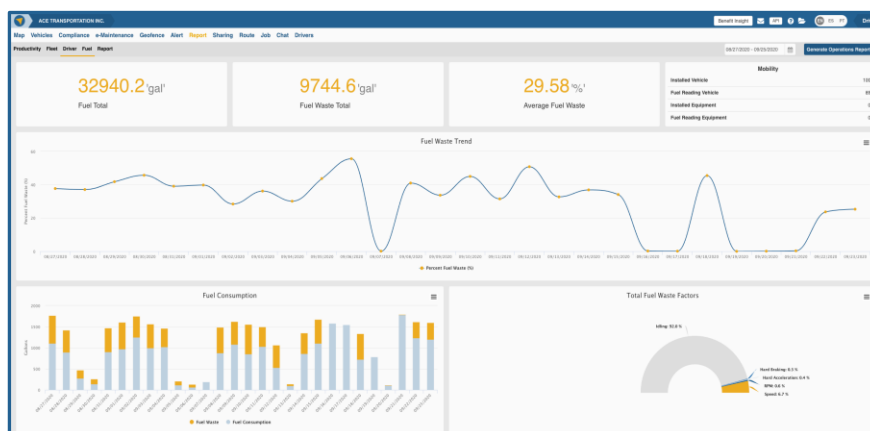
FleetUp Advanced enables fleet managers to maintain tight control over fuel and maintenance

costs which typically account for over 60% of a fleet's total operating expenses.

When combined with the appropriate hardware, FleetUp Advanced enables fleet managers to remotely track all their vehicle locations and monitor the health of their entire fleet via their desktop computer or mobile device.



FleetUp Advanced provides real-time GPS vehicle tracking and geofence status.



FleetUp Advanced continuously monitors vehicle health.

Core features

FleetUp Advanced integrates the same GPS tracking features as FleetUp Standard enabling you to manage your fleet faster operations more simply and more intuitively than ever before:

- Real-time GPS tracking with 10 second updates
- Advanced map with live view, trip history, and data sharing
- Geofences with detention time, transit time analysis and entering and exiting alerts
- Suspicious movement detection to protect against theft
- Custom alerts for speeding and idling
- Vehicle inventory displayed on map for easy reference
- Custom tracking and monitoring alerts
- Robust reporting of driving behavior (speeding, harsh braking, etc.)
- Live ETA, trip history and account sharing
- Mobile app for fleet admins and drivers

Advanced Features

In addition, FleetUp Advanced provides a complete array of vehicle health monitoring tools that enable you to keep fuel and maintenance costs under control.

- Remote engine diagnostics – odometer, engine hours, temperature and other engine data
- Maintenance cycle management (oil filters, brakes, tire alignment, belts and hoses)
- Vehicle condition and engine codes
- Fuel tracking use and fuel-wasting analysis
- Remote engine starter shutoff (option)

FleetUp supported hardware



3NW

Additional features

| | |
|---|--|
| Customer support | FleetUp offers comprehensive customer support. Each customer will be onboarded and trained by our customer success team. Proactive customer care provides periodic check-ins to ensure you are utilizing FleetUp to its fullest capacity. |
| Free web API for integrations | FleetUp Advanced comes with free web API for integration with 3rd-party apps so you can extend the capabilities of the platform by integrating calendar, terminal management system (TMS), and warehouse management applications with the FleetUp Advanced platform. |
| Professional services (optional) | FleetUp Professional Services connects you to a FleetUp expert who will learn your business inside and out and tailor the FleetUp platform to your organization's unique needs. |