

Reefer container tacking and temperature control

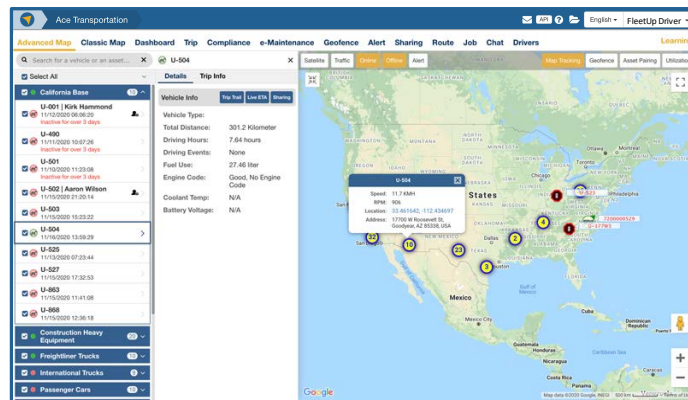
Product overview

FleetUp Asset Reefer provides end-to-end tracking for large truck trailers as well as temperature control for cargo that requires refrigerated transport (e.g. food products, pharmaceuticals, chemicals, flowers).

FleetUp Asset Reefer lets you pinpoint the exact location of any trailer or refrigeration shipping container from the time it is loaded up at the shipping terminal until it is delivered to its final destination.

When paired with the appropriate FleetUp hardware, Asset Reefer tracks the location of your refrigerated containers and sends real-time alerts in the event that the internal temperature fluctuates from required settings.

FleetUp Asset Reefer is a critical tool for tracking reefer locations in real-time and maintaining consistent temperature and humidity levels for cargo that can be damaged due to temperature variations during transit.



FleetUp Asset Reefer ensures that the temperature of reefer containers is properly maintained at all times

Asset Reefer key features

- Temperature and humidity monitoring
- Inventory reports
- Real-time GPS tracking with 10 second updates
- Advanced map with live view, trip history, and data sharing
- Geofence entrance and exit alerts
- Asset inventory utilization displayed on map
- Battery level and charging status alerts
- Custom tracking and monitoring alerts
- Lock status, remote unlock button
- Cable cut alerts
- Asset pairing record and alerts when vehicles meet and separate
- Live ETA, trip history and account sharing
- Mobile app for fleet admins and operators
- Optional solar chargers

FleetUp supported hardware



4CT

Additional features

<p>Customer support</p>	<p>FleetUp offers comprehensive customer support. Each customer will be onboarded and trained by our customer success team. Proactive customer care provides periodic check-ins to ensure you are utilizing FleetUp to its fullest capacity.</p>
<p>Free web API for integrations</p>	<p>FleetUp Asset Reefer comes with free web API for integration with 3rd-party apps so you can extend the capabilities of the platform by integrating calendar, terminal management system (TMS), and warehouse management applications with the FleetUp Asset Reefer platform.</p>
<p>Professional services (optional)</p>	<p>FleetUp Professional Services connects you to a FleetUp expert who will learn your business inside and out and tailor the FleetUp platform to your organization's unique needs.</p>

Increase your operational visibility today.

For more information, please visit www.fleetup.com